

Save Greater Sydney Coalition Parliamentary Forum
Parliament House 7th Aug 2024

**Getting Housing Right.
Why it matters?**

AFFORDABLE HOUSING & HERITAGE



**POTTS POINT
PRESERVATION GROUP**
www.pottspointpreservation.org

Dr Peter Sheridan AM
Chairman, Potts Point Preservation Group



**6 CURRENT
REDEVELOPMENTS
JULY 2024**


* 209 apartments reduced to 85

* net loss of 124 apartments




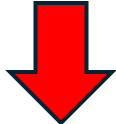
* 26-75% dwelling loss

* loss of all one-bedders or studios

* NO new one-bedders or studios

 POTTS POINT / ELIZABETH BAY DA PROPOSALS <i>as of 1st May 2024</i>					
ADDRESS	ORIGINAL NUMBER OF APARTMENTS	ORIGINAL NUMBER OF 1 BED/ STUDIOS	PROJECTED NUMBER OF APARTMENTS	FINAL NUMBER OF STUDIOS & 1 BEDROOM APARTMENTS	REDUCTION IN APARTMENTS
CHIMES 46-53 Macleay St Potts Point	80	80	31	0	61%
11A & 13A Wylde St Potts Point	20	20	5	0	75%
29 Billyard Ave Elizabeth Bay	32	0	9	0	71%
1 Onslow Place Elizabeth Bay	12	12	6	0	50%
10 Onslow Ave & 21C Billyard Ave Elizabeth Bay	30	16	22	0	26%
51-57 Bayswater Rd Rushcutters Bay	35	35	12	0	66%
TOTALS	209	163	85 (all 3-4 bedrooms)	0	AVERAGE LOSS 58%
NET LOSS OF 124 APARTMENTS					

SOCIAL IMPACT OF RECENT REDEVELOPMENT PROPOSALS

-  **LOSS OF HOUSING STOCK**
-  **LOSS OF AFFORDABLE ACCOMMODATION**
-  **LOSS OF LONG-TERM RESIDENTS**
-  **LOSS OF COMMUNITY DIVERSITY & CHARACTER**

EXISTING

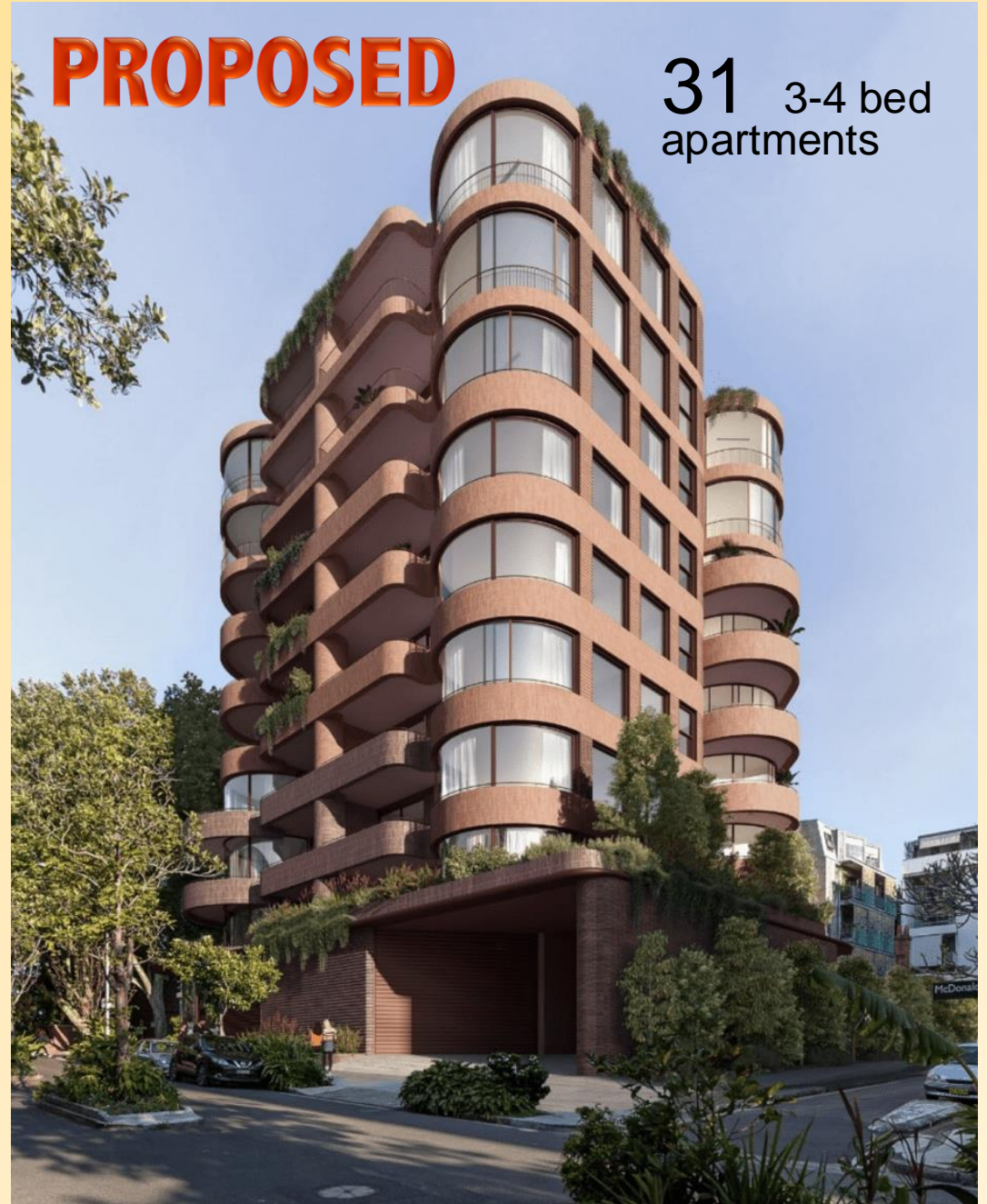
80 studio/1 bed
apartments

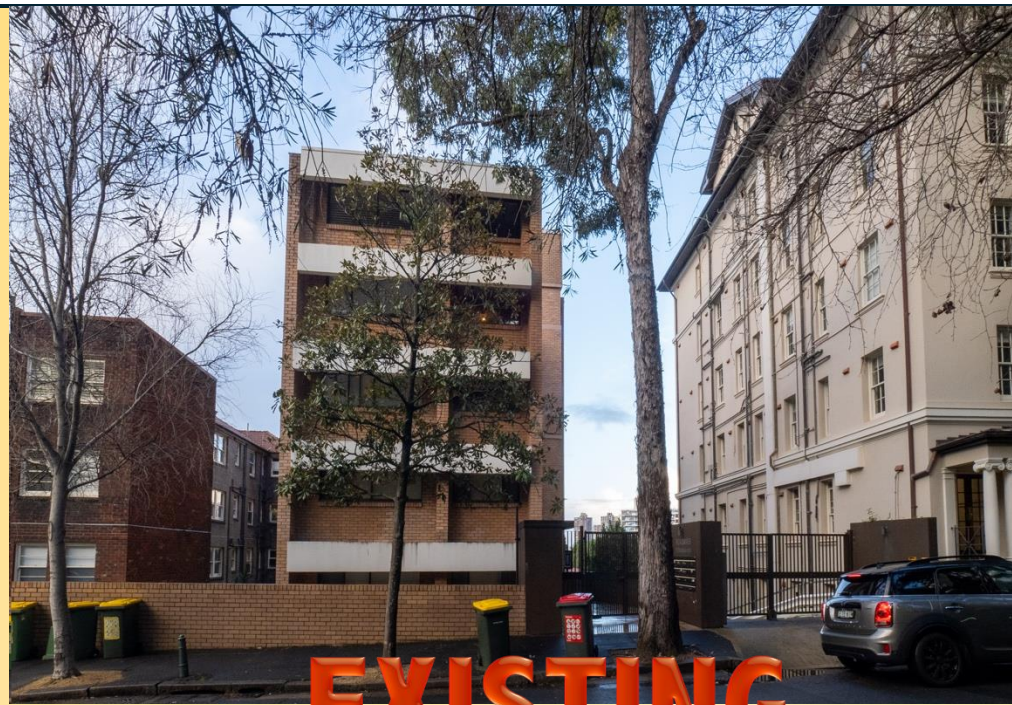


CHIMES – Macleay Street, Potts Point (1964)
Architect: Hugo Stossel

PROPOSED

31 3-4 bed
apartments





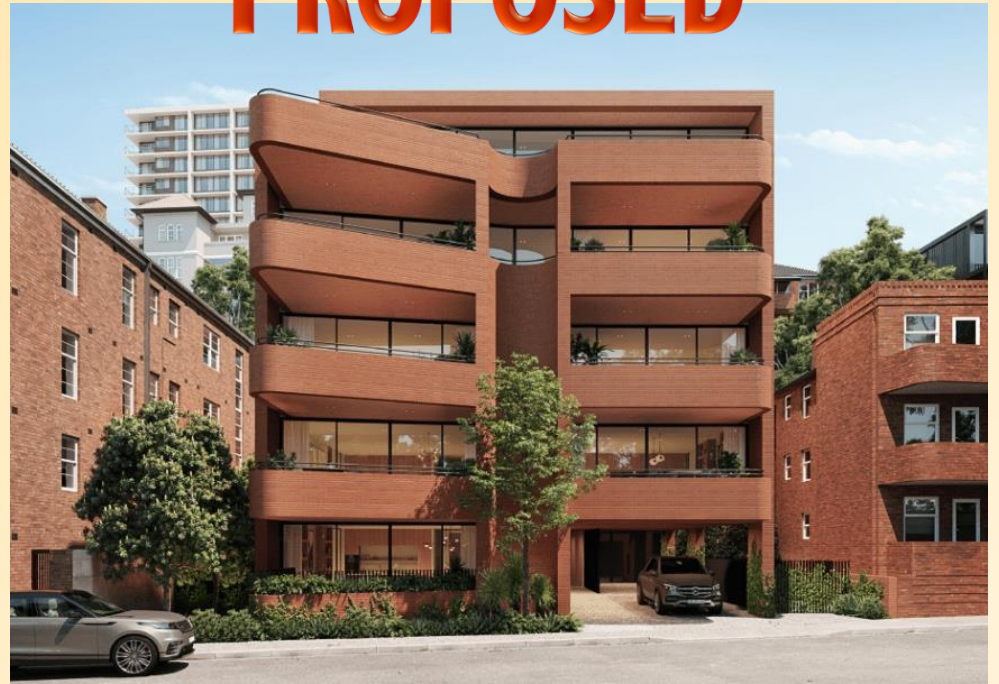
FRONT



PROPOSED



REAR



10 Onslow Ave & 21c Billyard Ave
Elizabeth Bay. (c1970)

DWELLINGS & LIFESTYLE



POTTS POINT
ELIZABETH BAY



APARTMENTS	>90%	22%
LIVE IN APARTMENTS	98%	22%
0-1 BEDROOMS	56%	7%
RENTED	>64%	32%
SINGLE	60%	24%
NO VEHICLES	44%	9%

The 1sq km area of Potts Point & Elizabeth Bay is the only place in Australia with a condensed hub of 20th century apartment blocks

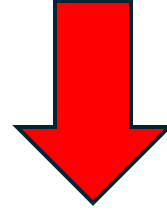
**75 ART DECO
APARTMENT BLOCKS
(1926-1950)**

**NONE STATE
HERITAGE LISTED**

**30 MODERNIST
APARTMENT BLOCKS
(1958-1970)**

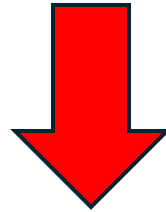


LOSS OF EXISTING AFFORDABLE HOUSING



Hurts the most vulnerable

TARGETING HERITAGE AS AN ENEMY



**Destroys our history
No legacy of custodianship**

THIS SHOULD NOT BE THE COST OF CREATING MORE HOUSING IN SYDNEY