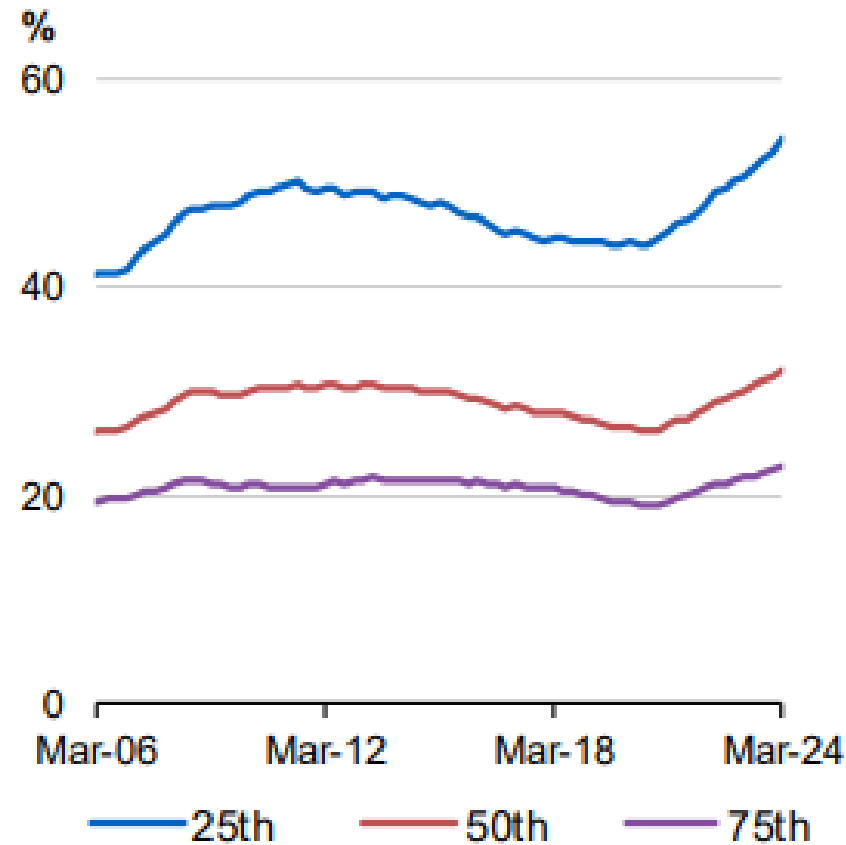


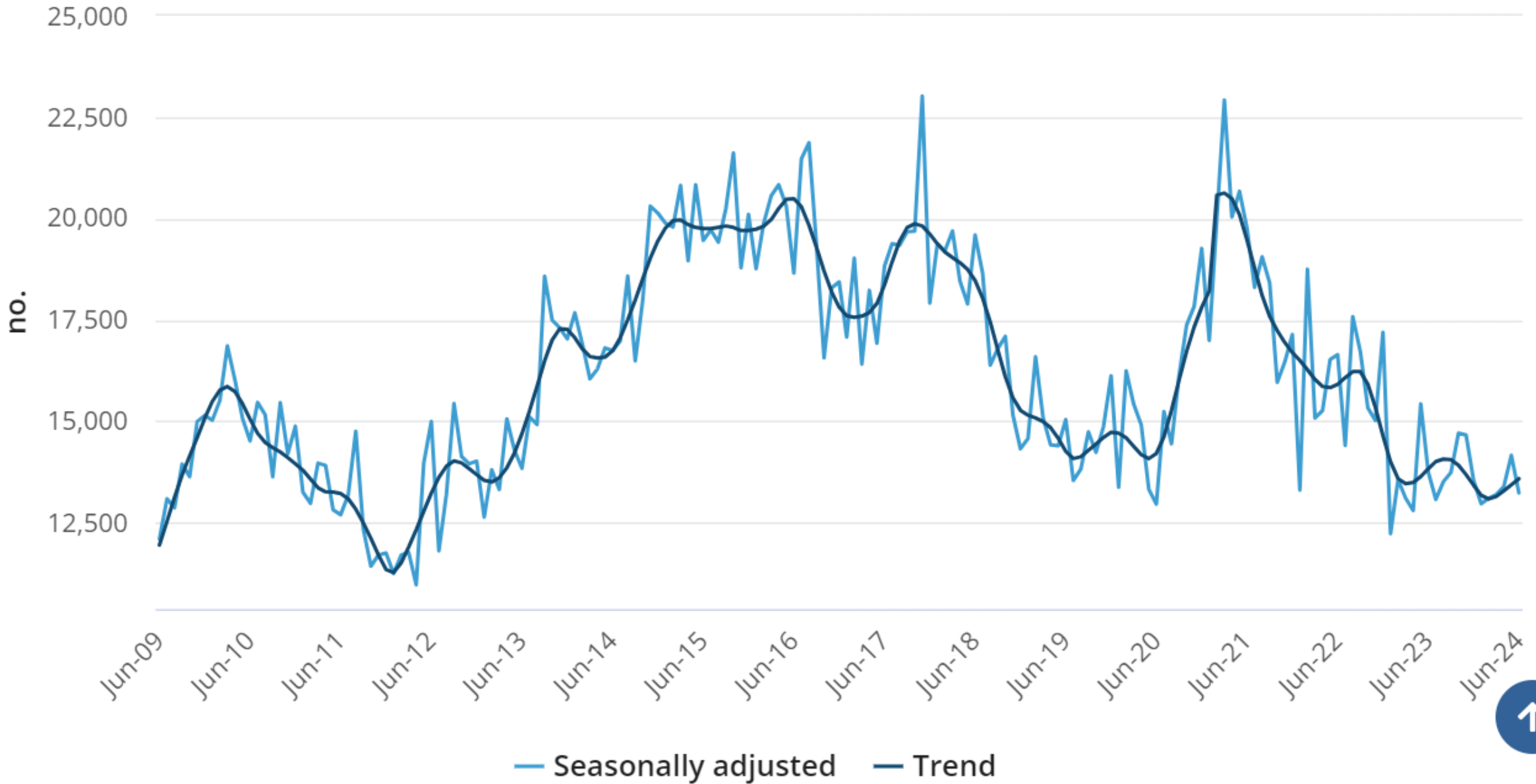
Chart 4.11: Share of income to service rent, by income and rent quartile



Source: CoreLogic, POLIS@ANU Centre for Social Policy Research

Note: Income refers to median gross disposable household income. Data is for national dwellings, reported quarterly. Households in a given income quartile are matched to the equivalent rent quartile.

Dwelling units approved



Source: ABS July 30

No shortage of housing structures...

National Housing Accord

National Housing and Homelessness Plan

Housing Australia Future Fund

Social Housing Accelerator Payment

Housing Support Program

New Homes Bonus

National Housing Supply and Affordability Council

Affordable Housing Bond Aggregator

National Housing Infrastructure Facility

National Planning Reform Blueprint

Help to Buy

Home Guarantee Scheme

No shortage of housing structures...

National Housing Accord

National Housing and Homelessness Plan

Housing Australia Future Fund

Social Housing Accelerator Payment

Housing Support Program

New Homes Bonus

National Housing Supply and Affordability Council

Affordable Housing Bond Aggregator

National Housing Infrastructure Facility

National Planning Reform Blueprint

Help to Buy

Home Guarantee Scheme

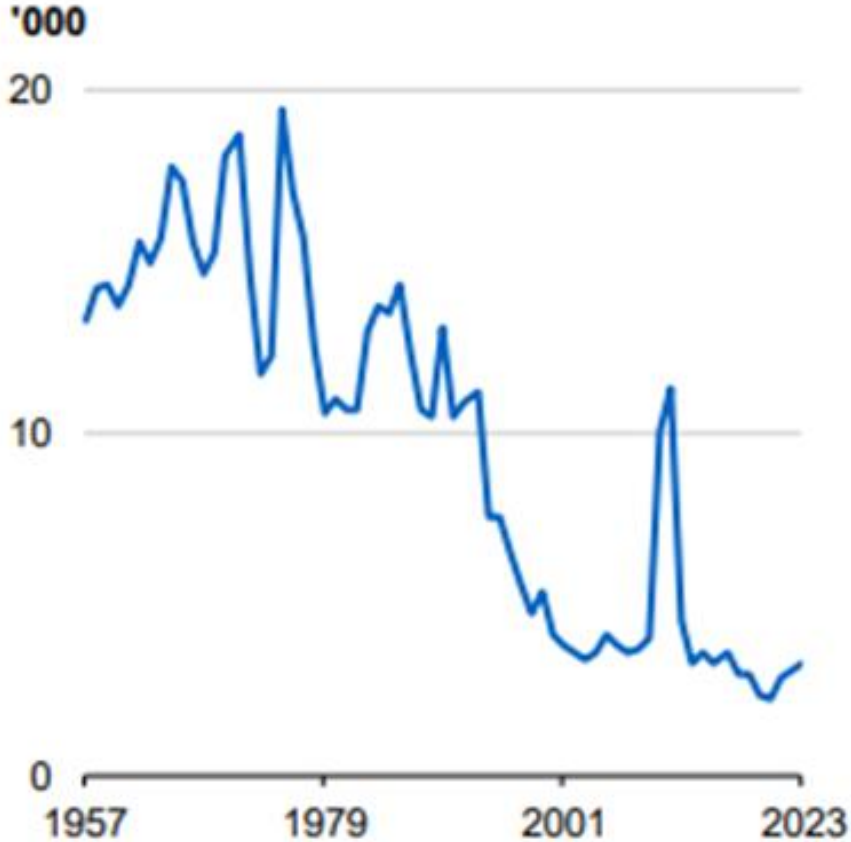
Tell him he's dreaming...

Table 4.1 Projections of new market supply, demand and net balance

Year	Gross new supply	Net new supply	New demand	Net balance (net new supply less new demand)
2023-24	177,676	171,001	208,280	-37,279
2024-25	173,443	166,926	173,229	-6,303
2025-26	179,507	172,762	180,578	-7,816
2026-27	183,731	176,828	172,290	4,538
2027-28	183,525	176,629	173,705	2,924
2028-29	182,850	175,980	171,220	4,760
Total during forecast period	1,080,733	1,040,126	1,079,302	-39,176
<i>Memo item</i>				
<i>Total during National Housing Accord period</i>	<i>903,056</i>	<i>869,126</i>	<i>871,022</i>	<i>-1,897</i>

Source: NHSAC 2024.

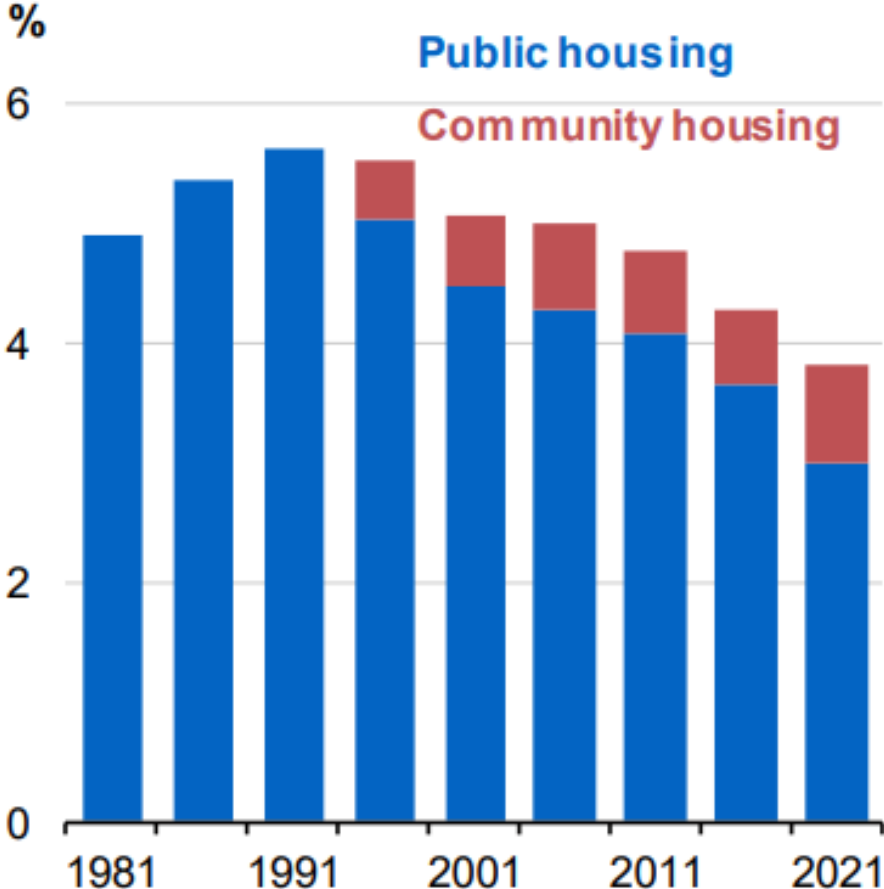
Chart 4.6: Public housing completions



Source: ABS Building Activity, Treasury

Source: May budget papers

Chart 4.7: Social housing stock as a share of housing stock



Source: National Housing Supply and Affordability Council analysis of ABS Census data, Treasury

Budget Paper No. 1, page 131, paragraph 2:

“Research notes that since 1996, the level of social housing construction has not been enough to keep pace with sales and demolitions of existing social housing stock.”

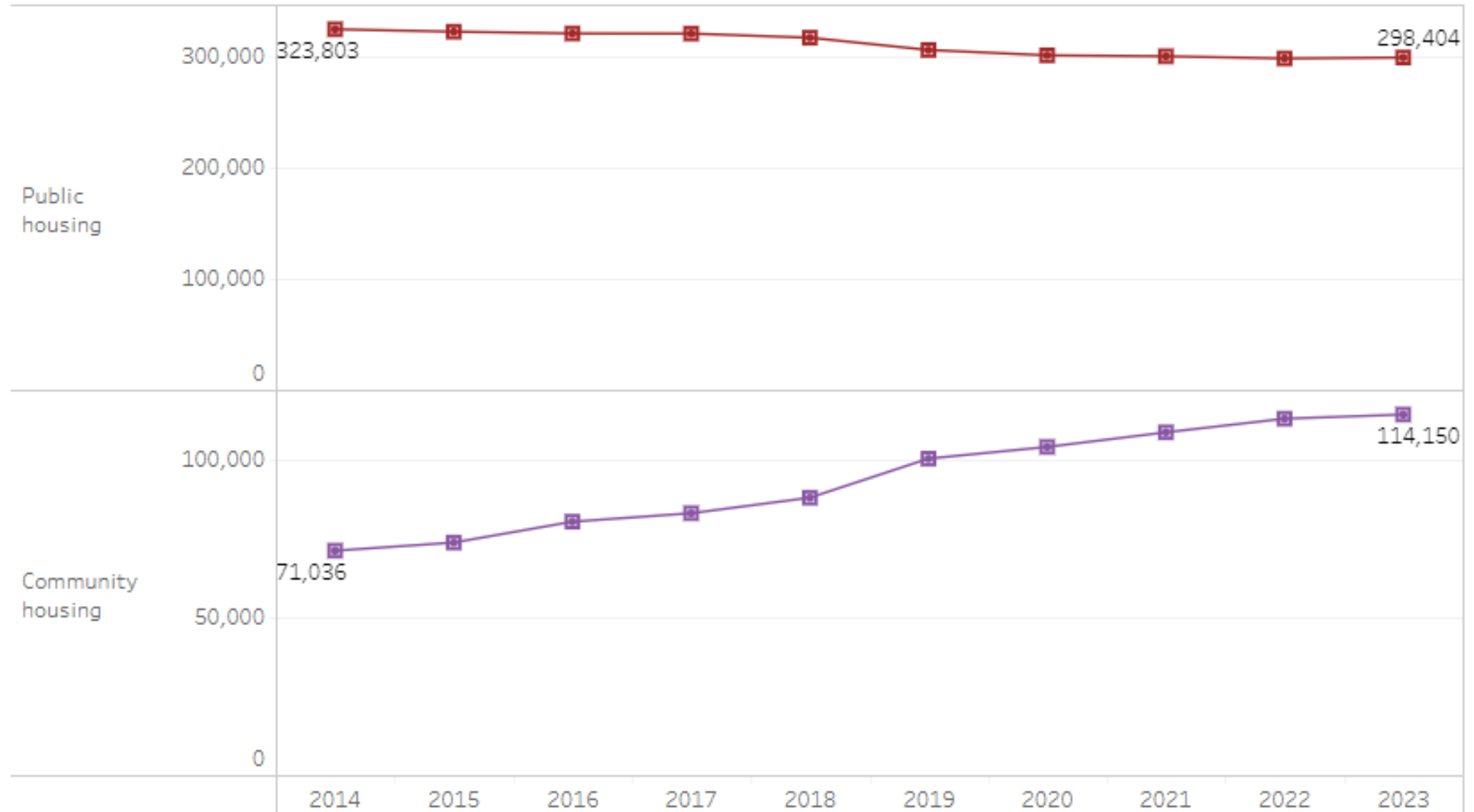
NSW dwelling units approved 2023-24

Total	42,473
Private	41,813
Public	660
	1.6%

Productivity Commission shame file

Figure 18.1 Size and scope of housing in Aust

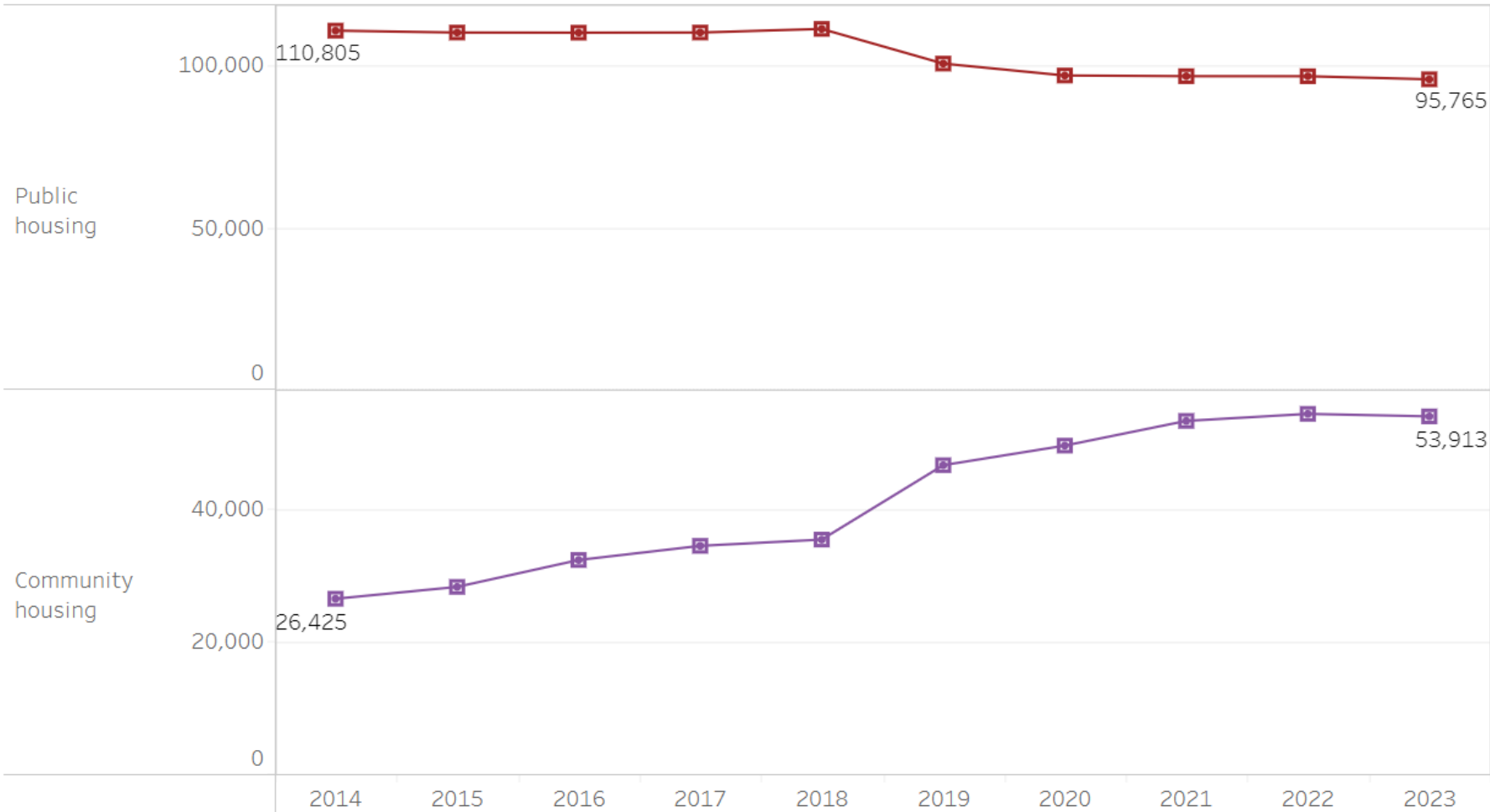
By year, by housing type (a)



Source: tables 18A.3

Productivity Commission NSW shame file

Figure 18.1 Size and scope of housing in NSW
By year, by housing type (a)



Public down 15,040

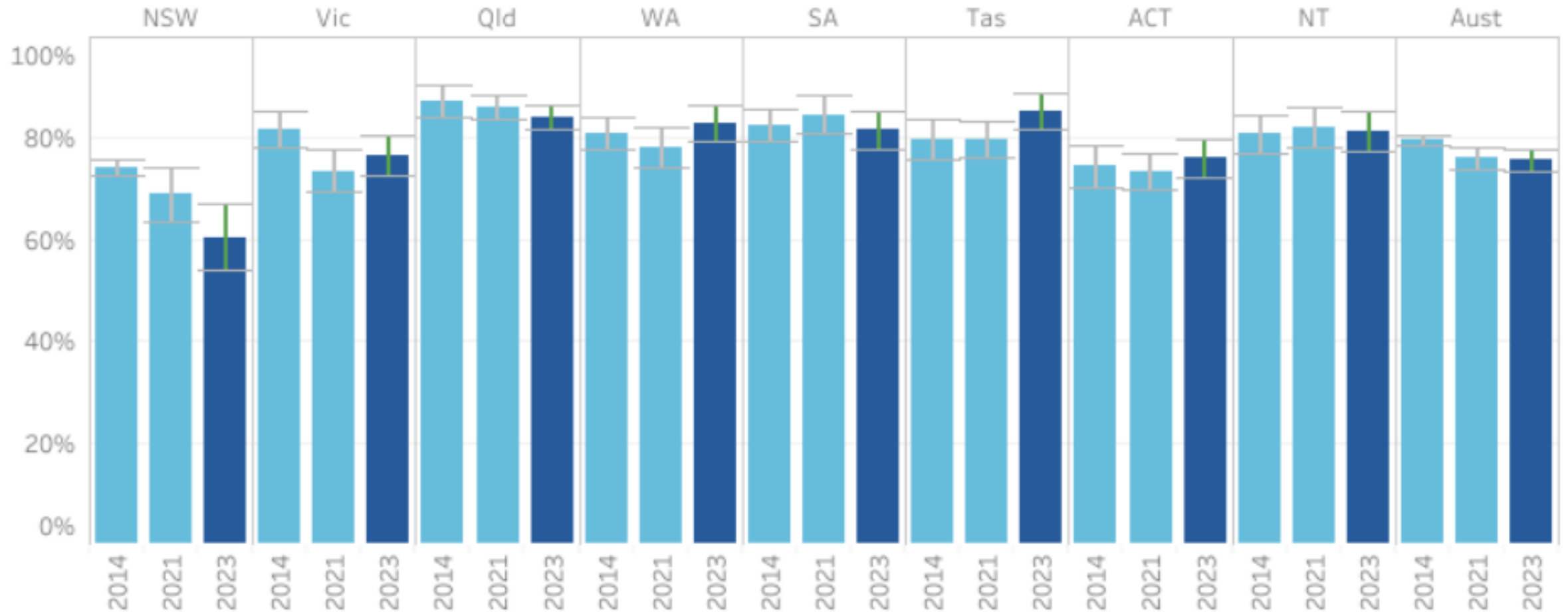
Community up 27,488

**Net social housing gain
(if it's occupied) 12,448**

Source: tables 18A.3

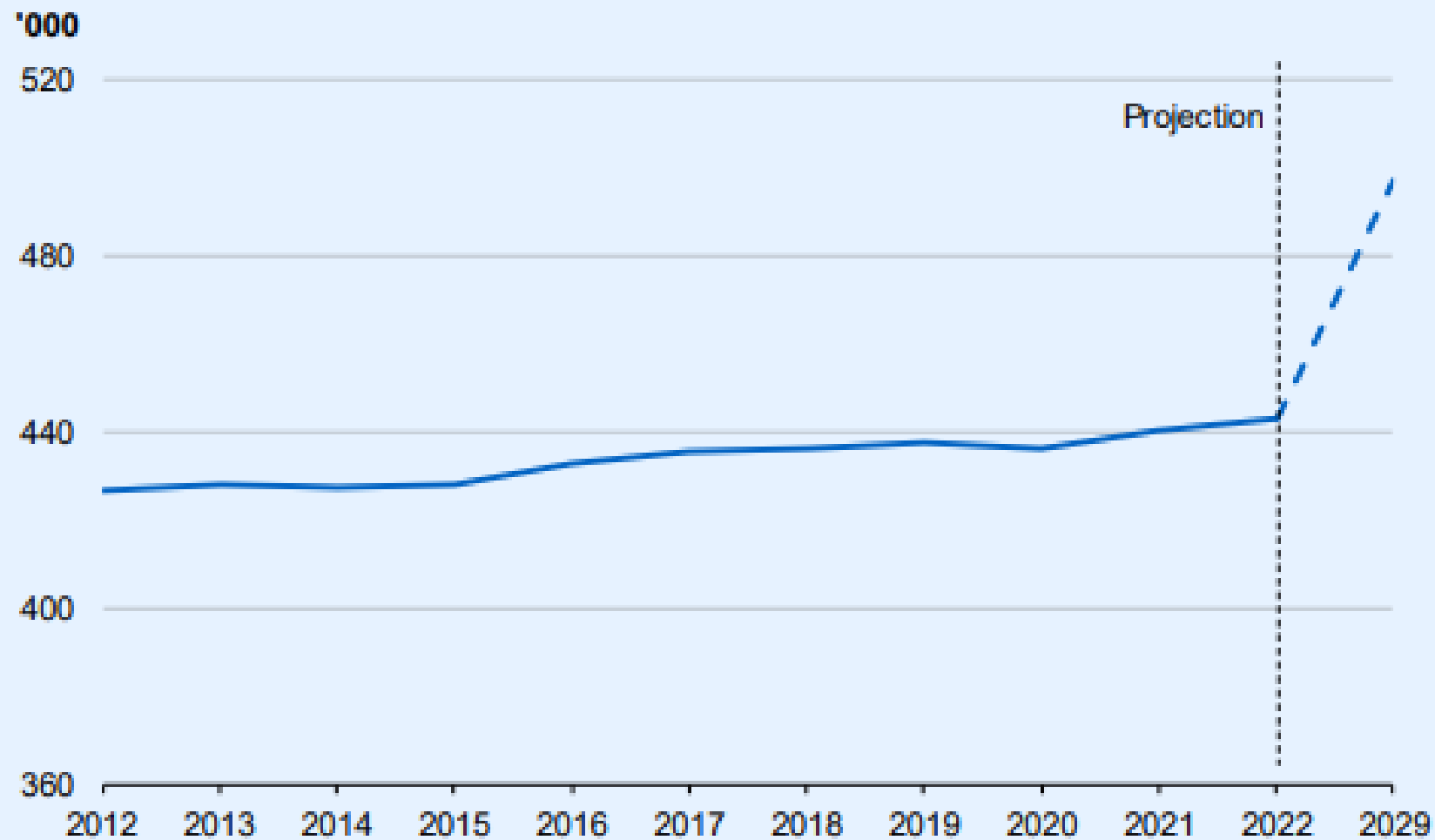
Productivity Commission shame file

Figure 18.7 Dwellings meeting agreed minimum acceptable standards, *Public housing*
By jurisdiction, by year



Source: table 18A.41

Chart 4.8 Social and affordable housing stock levels and impact of Government's investment



Source: AIHW, Treasury



